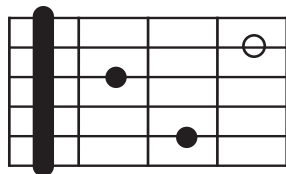


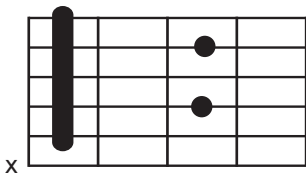
Must-know blues chords shapes

Root 6, A7 chord (1:50)
(optional pinky)



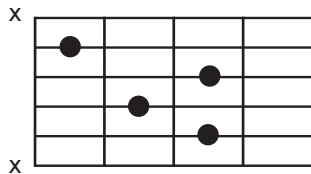
5fr

Root 5, D7 chord (4:04)



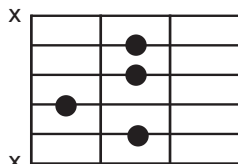
5fr

Root 5, D7 chord (11:27)



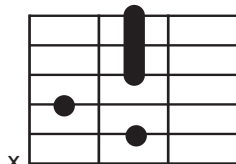
5fr

Root 5, D9 chord (6:30)



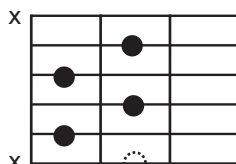
5fr

Root 5, D9 chord (7:15)
(alternate fingering)



5fr

End Chord, Rootless A9 chord (8:49)
Root note would be on fret 5, string 6



5fr

Playing through a I, IV, V progression

This progression is the basis of many blues songs. If played in A, then:

I chord = A

IV chord = D

V chord = E

Common use of the above chords through this progression is:

$I_7 / IV_7 / I_7 / V_7 / IV_7 / I_7$ or

$I_7 / IV_9 / I_7 / V_9 / IV_9 / I_7$