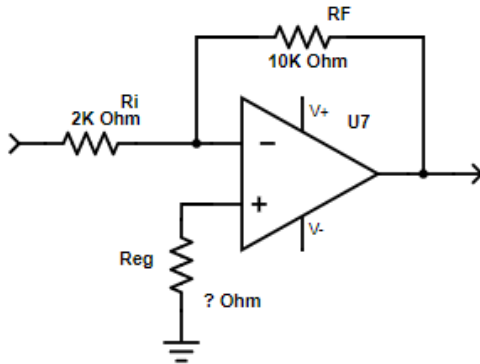


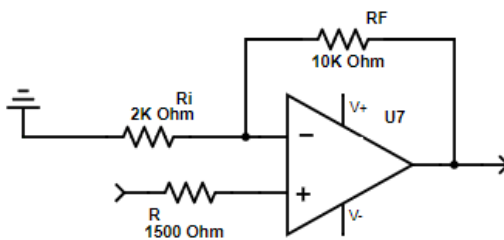
# Electronic Al's Class Room

[www.alselectronicclassroom.com](http://www.alselectronicclassroom.com)



From the circuit on the left Find the following

- Gain of the Amplifier
- Value of Reg.
- 2 v P-P Sinewave In What is the Output
- Are the input and Output in Phase or out of Phase

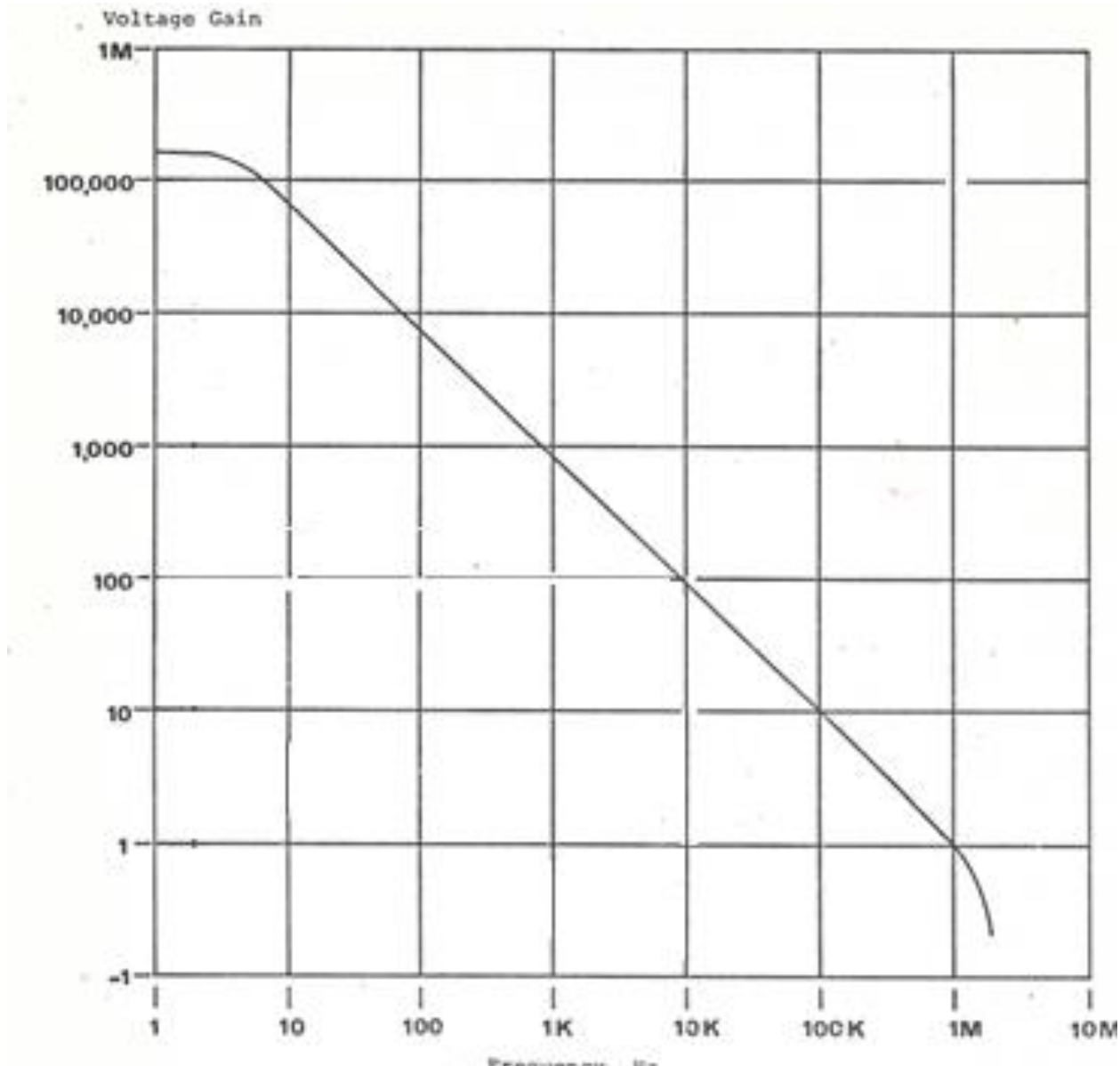


From the circuit on the left Find the following

- Gain of the Amplifier
- Value of Reg.
- 2 v P-P Sinewave In What is the Output
- Are the input and Output in Phase or out of Phase

# Electronic Al's Class Room

[www.alselectronicclassroom.com](http://www.alselectronicclassroom.com)

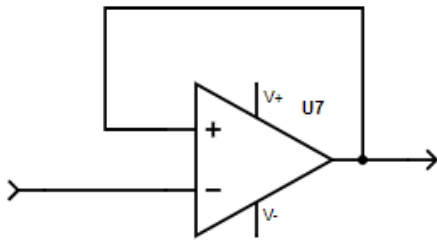


From the Graph above : Circuit designer has designed a circuit that has gain of 50 he believe that operational amplifier with a constant gain to a frequency 100 KHz. Will this work using the graph at top?

If not what is the frequency?

# Electronic Al's Class Room

[www.alselectronicclassroom.com](http://www.alselectronicclassroom.com)



From the circuit on the left Find the following

- Gain of the Amplifier
- 2 v P-P Sinewave In What is the Output
- Are the input and Output in Phase or out of Phase