

FORENSIC SCIENCE ACADEMY

CRIME SCENE INVESTIGATION



WHAT DOES A CSI INVESTIGATE?

HOMICIDES

ATTEMPTED HOMICIDE

SEXUAL ASSUALTS

OFFICER INVOLVED

OTHER



TYPICAL INVESTIGATION TEAM

**ONE CSI
TWO DETECTIVES
AND A SUPERVISOR**



**THE INVESTIGATION BEGINS WITH
THE CALL OUT...**

**MAKE SURE YOU GET PLENTY OF
SLEEP DURING YOUR
“ON CALL WEEK”**



SCENE BRIEFING

**VALUABLE INFORMATION
FROM 1ST RESPONDER(S)**

QUESTIONS I ASK...



SCENE BRIEFING

QUESTIONS I ASK...



**WAS ANYTHING TOUCHED / MOVED
IS THE VICTIM STILL AT THE SCENE
IS SUSPECT KNOWN / INCUSTODY
ARE THERE ANY WITNESSES**



**JUDITH IN SEASON 38 THE
WALKING DEAD**

SCENE WALK-THRU

**THIS IS WHERE YOU FIND OUT
WHAT YOUR INVESTIGATION
IS REALLY ABOUT**

TAKE IT SLOW



SCENE WALK-THRU

WALK WITH THE DETECTIVES

**ASK QUESTIONS OF THE
1ST RESPONDER(S)**



SCENE WALK-THRU

**WALK THRU NORTH / SOUTH
OR EAST / WEST**

EVENTUALLY GO BOTH WAYS



WHAT TO LOOK FOR IN A SCENE

**DETERMINE WHERE CRIME
OCCURRED**

AND WHERE IT DIDN'T OCCUR



WHAT TO LOOK FOR IN A SCENE

SUSPECT'S ACTIONS –

**WHAT DID HE/SHE DO
ENTRY/EXIT POINTS
PATH
ACTIONS**



WHAT TO LOOK FOR IN A SCENE

ACTIONS OF THE VICTIM

**WHAT WHERE THEY DOING
PRIOR TO INJURY / DEATH**



WHAT TO LOOK FOR IN A SCENE

WHAT HAPPENED AFTER INJURY / DEATH OCCURRED

WAS THE SCENE WAS **STAGED?**



WHAT TO LOOK FOR IN A SCENE

**HAVE ANY STATEMENTS BEEN
PROVEN OR DISPROVED**



SCENE WALK-THRU

**HAVE DETECTIVES DETERMINE
THE SCENE EVIDENCE**

WHY?



SCENE WALK-THRU

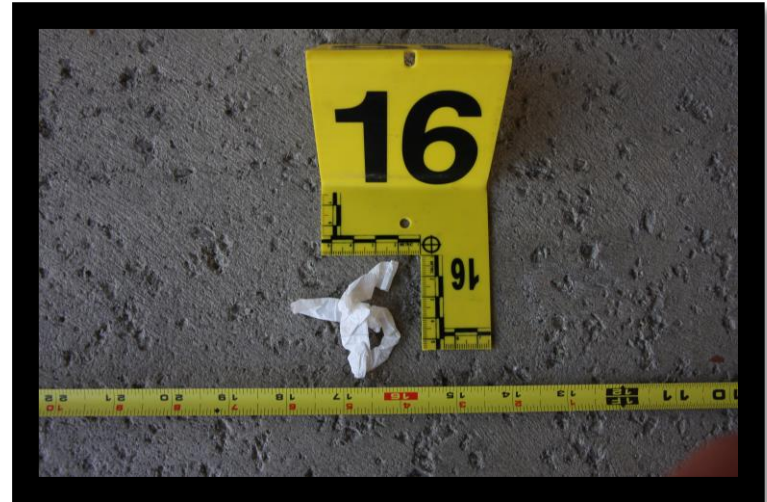
PLACARDS – PHYSICAL EVIDENCE
GET NUMBERED PLACARDS

BIOLOGICAL GETS ALPHA
PLACARDS



SCENE WALK-THRU

**PLACE CLOSE
TO EVIDENCE**

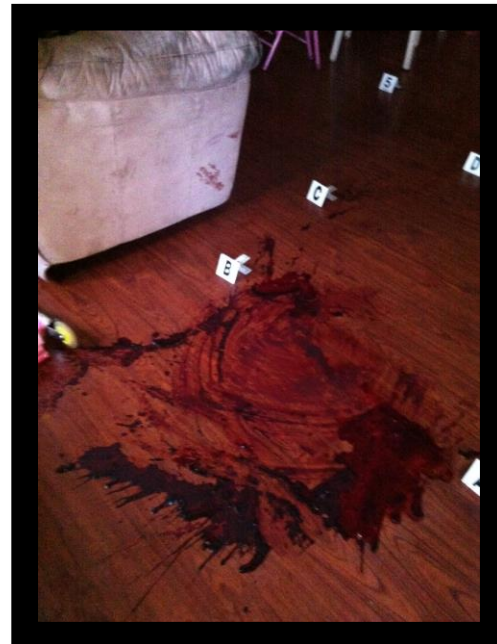


AT 90 DEGREES



SCENE WALK-THRU

PLACARDS – PLACE NUMERICALLY
AND FACING THE SAME WAY



NOTE TAKING

**IT STARTS FROM THE TIME
YOU ARRIVE ON SCENE**

**UNTIL YOU RETURN TO
THE STATION.**

