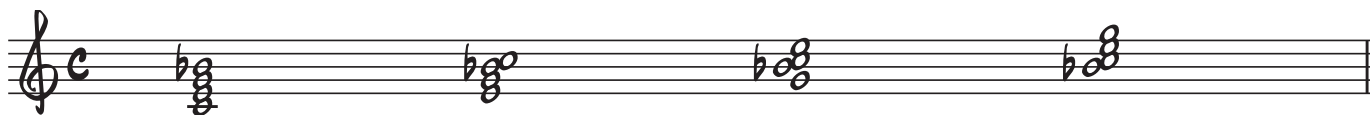


Drop 2 Chord Voicings

Drop 2 chord voicings are voicings which work well on the guitar. They contain the perfect spread of notes for the guitar's unique tuning. Most piano voicings do not work well on the guitar because they use smaller intervals. It is easy to see how with piano voicings, one would want to play notes which are closer together as this requires less stretching of the hand. The opposite is true on the guitar. As the guitar is tuned in fourths, voicings with larger intervals between chord tones are more suitable. Drop 2 voicings contain mostly thirds, fourths and fifths with some tones and semi-tones.

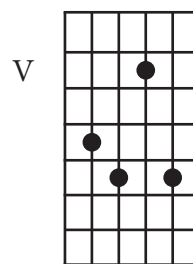
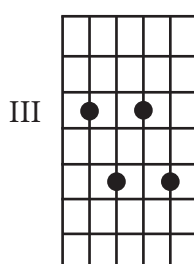
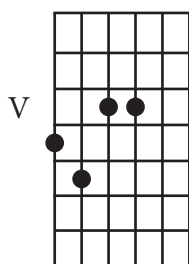
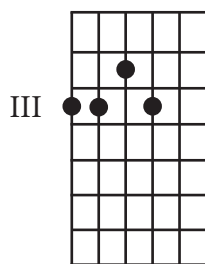
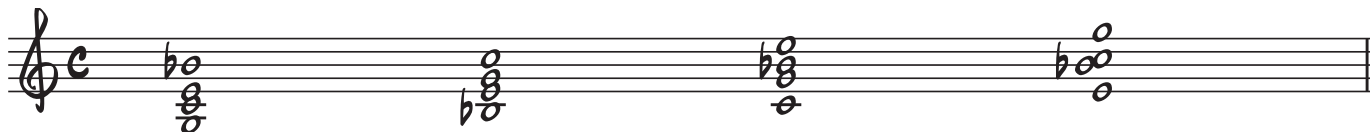
Drop 2 voicings are based on the four closed position voicings of a 4 note chord. In such a chord, the voices will be the soprano, alto, tenor and bass. These can also be referred to as the 1st, 2nd, 3rd and 4th voices where the soprano is voice 1 and the bass is voice 4. To construct a drop 2 chord voicing, simply lower the 2nd voice (alto) one octave. This will produce a voicing with more space between the voices.

The following example illustrates all inversions of C⁷ in closed position



Try playing any of these four voicings on the guitar. You instantly see that it is next to impossible to finger these voicings.

In this next example, the 2nd voice is dropped an octave lower to produce "Drop 2" voicings.



Although positions are indicated for each voicing, you should still strive to arrive at the correct positions using only the notes on the staff. I find it preferable to use only the notes to find the correct fingerings and positions. Again, this helps in familiarizing oneself with the guitar fingerboard. **All Drop 2 voicings will always work on the guitar.**