

Craft Chic

PATTERNS

Pattern no: **A001**

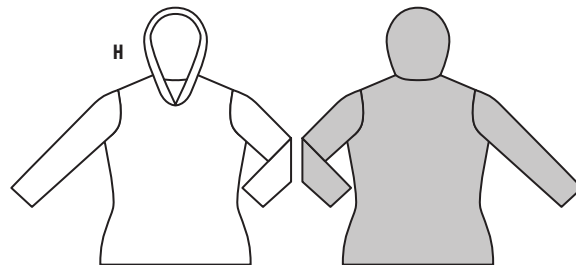
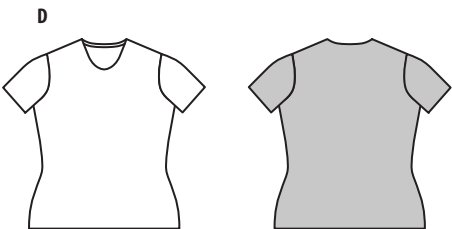
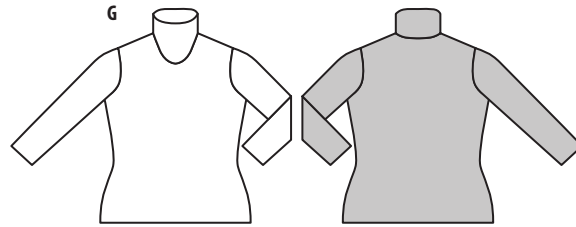
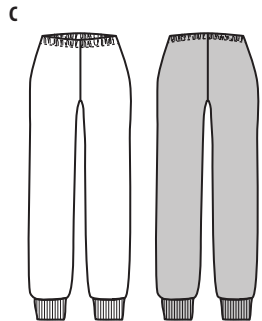
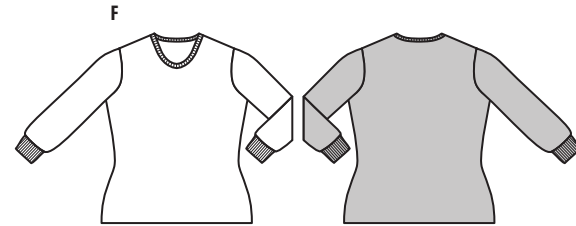
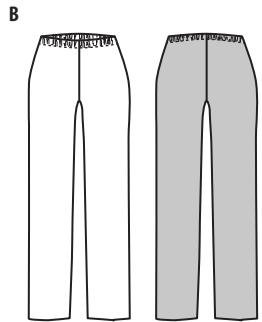
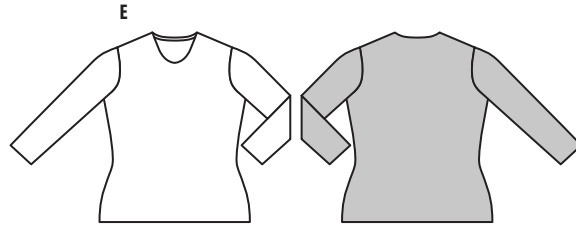
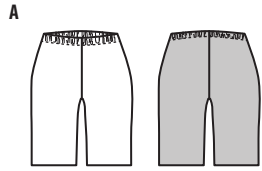
Size: **Adult XS - 3XL**

Difficulty Level: ● ○ ○ ○

Comfy Pajamas



Pattern Variations:



Materials:

- Fabric suggestions: Fleece / Cotton Lycra / Viscose Lycra.
For (A/B/C) you can also use a woven fabric like Cotton / Viscose / Linen.
- Elastic (25mm / 1" wide), to determine the length, use 75% - 80% of waist circumference.
- Cotton thread in matching colour.

Fabric Quantity:

Additional fabric may be needed to match design or for shrinkage.

Size:	XS m / yds	S m / yds	M m / yds	L m / yds	XL m / yds	2XL m / yds	3XL m / yds
A							
150cm / 60inch	0.65 / 7/8	0.65 / 7/8	1.00 / 1 1/8	1.00 / 1 1/8	1.10 / 1 1/4	1.40 / 1 5/8	1.40 / 1 5/8
115cm / 45inch	1.10 / 1 1/4	1.20 / 1 3/8	1.20 / 1 3/8	1.30 / 1 1/2	1.30 / 1 1/2	1.40 / 1 5/8	- / -
B, C							
150cm / 60inch	1.10 / 1 1/4	1.10 / 1 1/4	1.80 / 2	2.00 / 2 1/4	2.00 / 2 1/4	2.10 / 2 3/8	2.40 / 2 3/4
115cm / 45inch	2.10 / 2 3/8	2.20 / 2 1/2	2.20 / 2 1/2	2.30 / 2 5/8	2.30 / 2 5/8	2.40 / 2 5/8	- / -
D							
150cm / 60inch	1.00 / 1 1/8	1.10 / 1 1/4	1.10 / 1 1/4	1.20 / 1 3/8	1.20 / 1 3/8	2.00 / 1 1/4	2.10 / 2 3/8
115cm / 45inch	1.00 / 1 1/8	1.70 / 1 7/8	1.80 / 2	1.90 / 2 1/8	2.00 / 2 1/4	2.00 / 2 1/4	2.10 / 2 3/8
E, F							
150cm / 60inch	1.40 / 1 5/8	1.40 / 1 5/8	1.50 / 1 3/4	1.50 / 1 3/4	1.60 / 1 3/4	2.40 / 2 3/8	2.50 / 2 3/4
115cm / 45inch	1.40 / 1 5/8	2.10 / 2 3/8	2.20 / 2 1/2	2.30 / 2 5/8	2.40 / 2 5/8	2.40 / 2 5/8	2.50 / 2 3/4
G							
150cm / 60inch	1.40 / 1 5/8	1.40 / 1 5/8	1.50 / 1 3/4	1.50 / 1 3/4	1.60 / 1 3/4	2.60 / 2 3/8	2.60 / 2 3/8
115cm / 45inch	1.40 / 1 5/8	2.30 / 2 5/8	2.40 / 2 5/8	2.50 / 2 3/4	2.60 / 2 7/8	2.70 / 3	2.80 / 3 1/8
H							
150cm / 60inch	1.40 / 1 5/8	1.40 / 1 5/8	1.50 / 1 3/4	1.50 / 1 3/4	1.70 / 1 7/8	2.00 / 2 1/4	2.50 / 2 3/4
115cm / 45inch	1.60 / 1 3/4	2.10 / 2 3/8	2.20 / 2 1/2	2.30 / 2 5/8	2.40 / 2 5/8	2.70 / 3	2.70 / 3
Ribbing C							
25cm / 1/4 yds wide	0.25 / 3/8	0.25 / 3/8	0.25 / 3/8	0.25 / 3/8	0.25 / 3/8	0.25 / 3/8	0.25 / 3/8
Ribbing F							
25cm / 1/4 yds wide	0.15 / 1/4	0.15 / 1/4	0.15 / 1/4	0.15 / 1/4	0.25 / 3/8	0.25 / 3/8	0.25 / 3/8