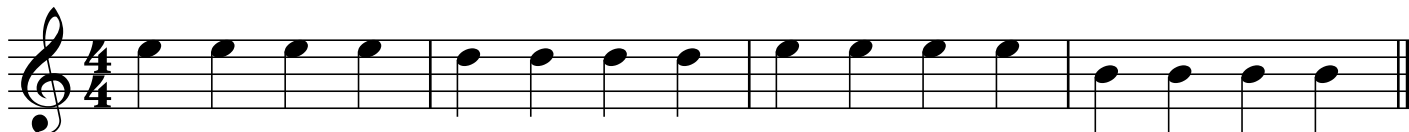
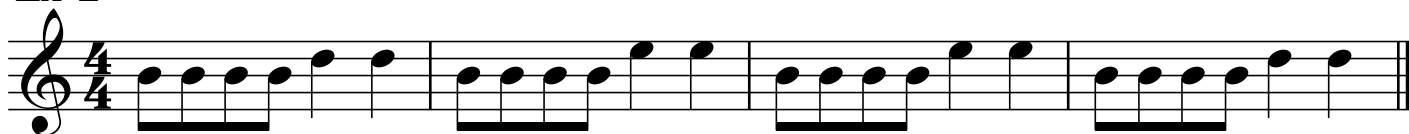


Reading Practice: BDE simple

Ex 1



Ex 2



Ex 3



Ex 4

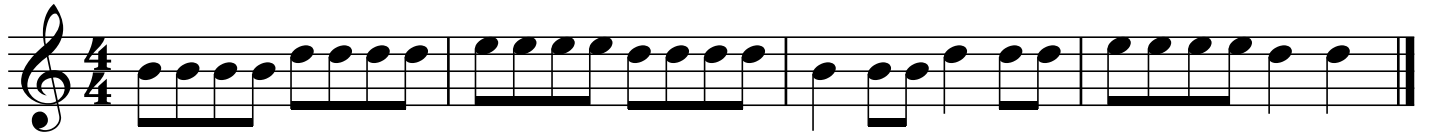


Ex 5



Reading Practice: B, D, and E

Ex. 1



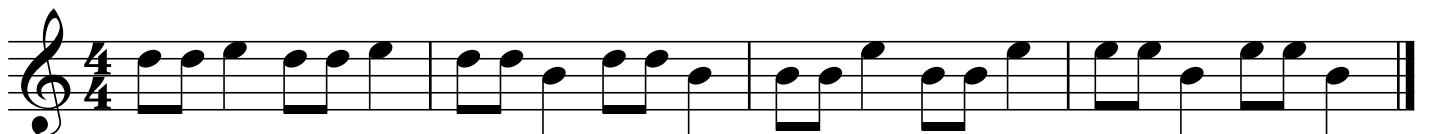
Ex. 2



Ex. 3



Ex. 4

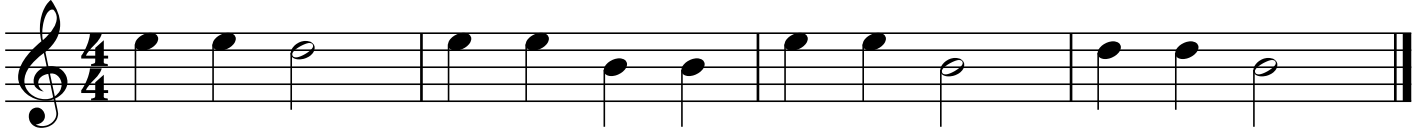


Ex. 5



Reading Practice: BDEG simple

Ex 1



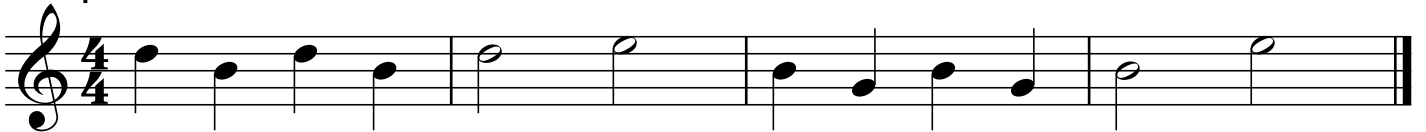
Ex 2



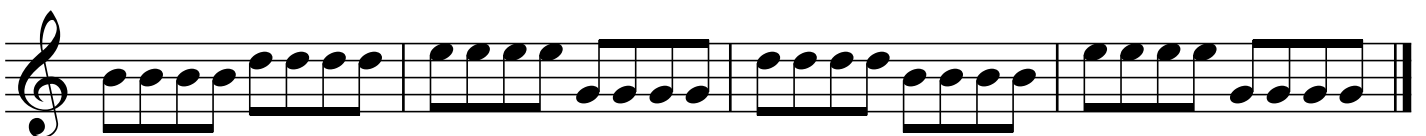
Ex 3



Ex 4



Ex 5



Reading Practice: B, D, E, and G

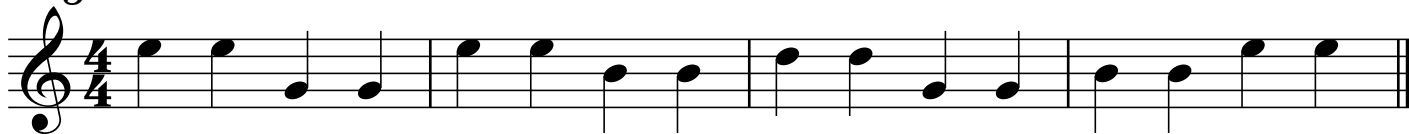
Ex 1



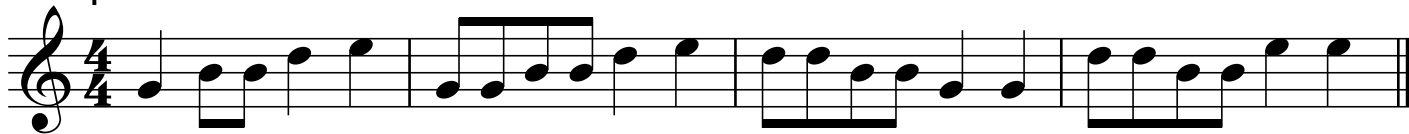
Ex 2



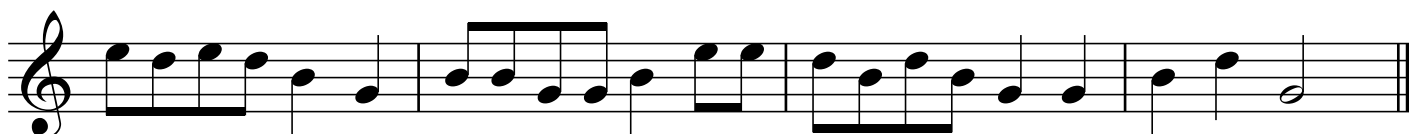
Ex 3



Ex 4

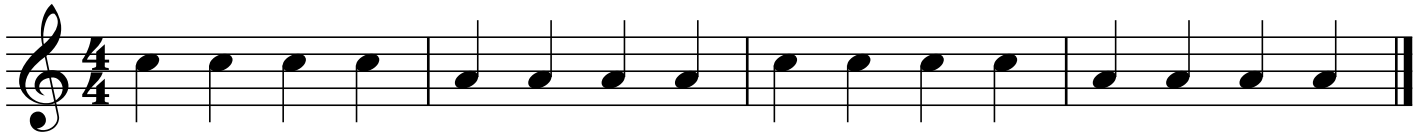


Ex 5

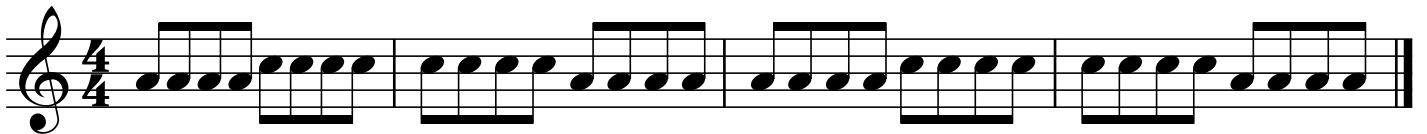


Reading Practice: C,A simple

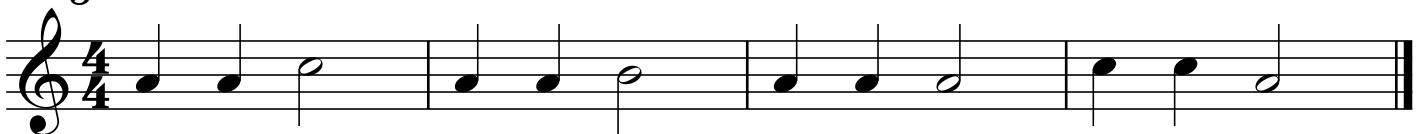
Ex 1



Ex 2



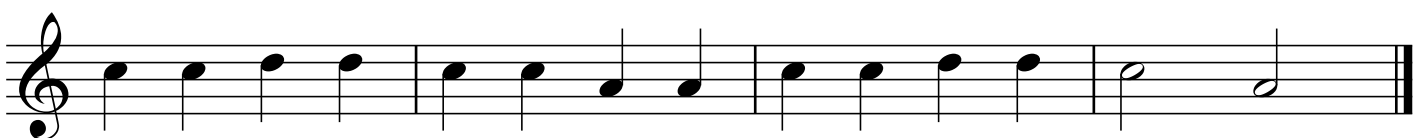
Ex 3



Ex 4



Ex 5



ReadingPractice: C and A

Ex 1



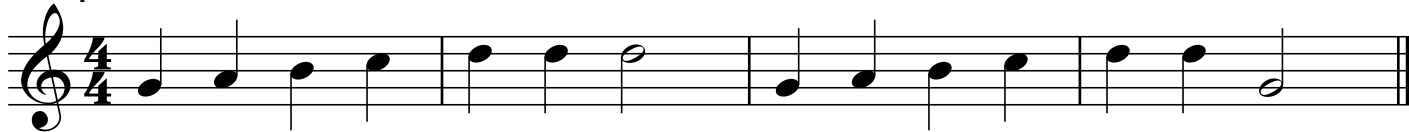
Ex 2



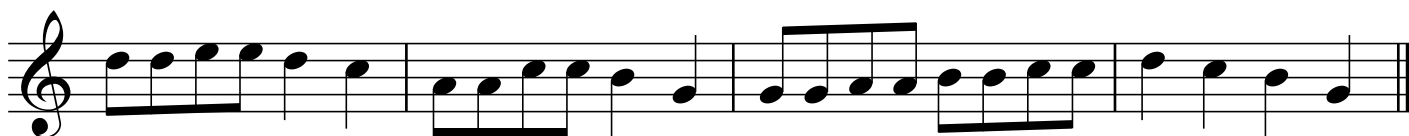
Ex 3



Ex 4



Ex 5



Reading Practice: Dotted Rhythms simple

Ex 1

Musical notation for Example 1: A single staff in 4/4 time with a treble clef. The melody consists of four measures. Each measure starts with a dotted quarter note on G4, followed by an eighth rest, then an eighth note on A4, and finally two quarter notes on B4 and C5. The piece ends with a double bar line.

Ex 2

Musical notation for Example 2: A single staff in 4/4 time with a treble clef. The melody consists of four measures. The first two measures each contain a quarter note on G4, a quarter note on A4, and a dotted quarter note on B4. The last two measures each contain a quarter note on C5, a quarter note on B4, and a dotted quarter note on A4. The piece ends with a double bar line.

Ex 3

Musical notation for Example 3: A single staff in 4/4 time with a treble clef. The melody consists of four measures. Each measure starts with a dotted quarter note on G4, followed by an eighth rest, then an eighth note on A4, and finally two quarter notes on B4 and C5. The piece ends with a double bar line.

Ex 4

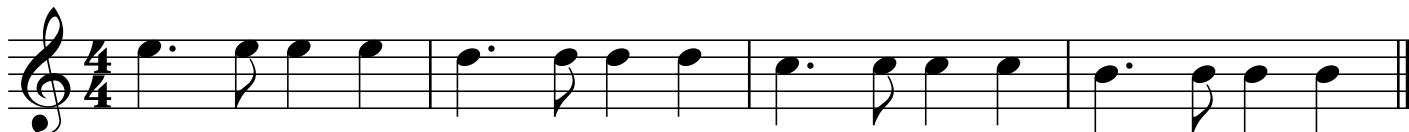
Musical notation for Example 4: A single staff in 4/4 time with a treble clef. The melody consists of four measures. Each measure starts with a quarter note on G4, followed by a quarter note on A4, and a dotted quarter note on B4. The piece ends with a double bar line.

Ex 5

Musical notation for Example 5: A single staff in 4/4 time with a treble clef. The melody consists of four measures. Each measure starts with a dotted quarter note on G4, followed by an eighth rest, then an eighth note on A4, and finally two quarter notes on B4 and C5. The piece ends with a double bar line.

Reading Practice: Dotted Quarters

Ex 1



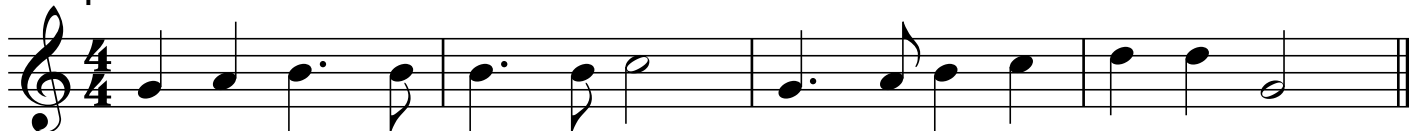
Ex 2



Ex 3



Ex 4

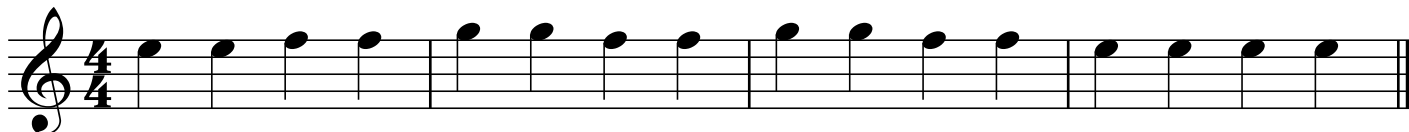


Ex 5

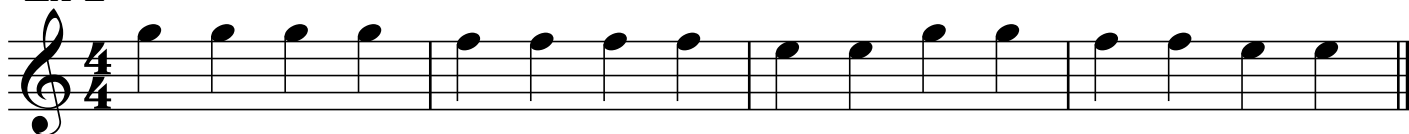


Reading Practice: E, F, and G

Ex 1



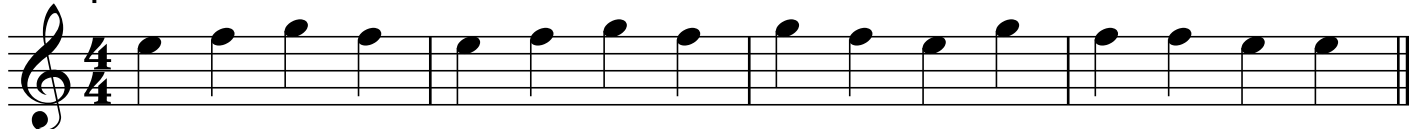
Ex 2



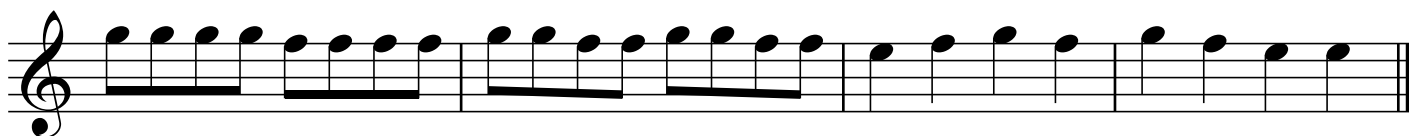
Ex 3



Ex 4

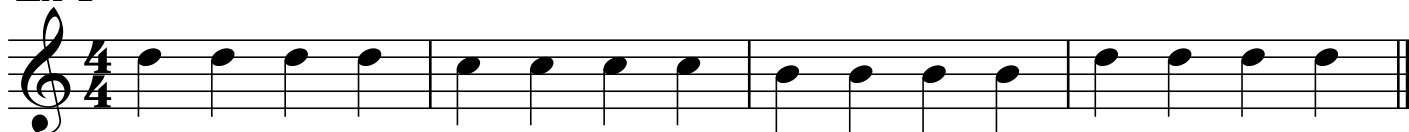


Ex 5



Reading Practice: EFG+ simple

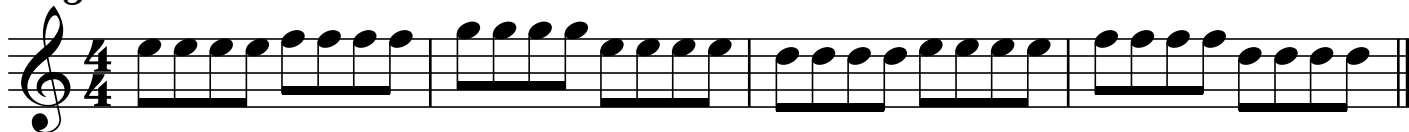
Ex 1



Ex 2



Ex 3



Ex 4



Ex 5



Reading Practice: EFG and more

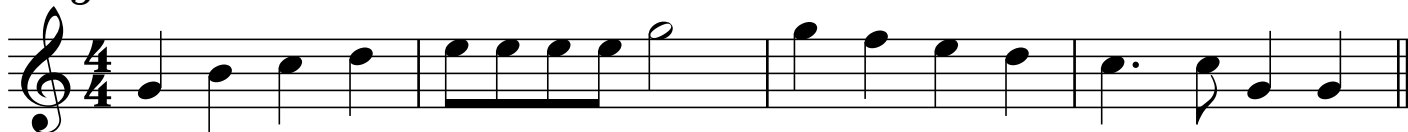
Ex 1



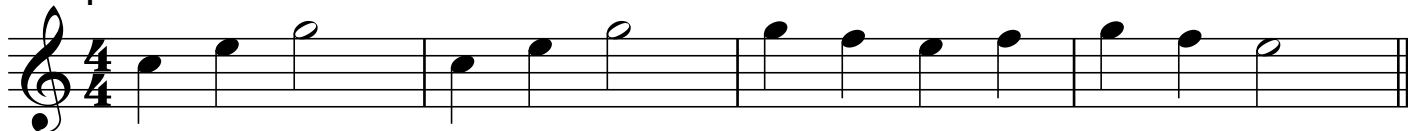
Ex 2



Ex 3



Ex 4



Ex 5

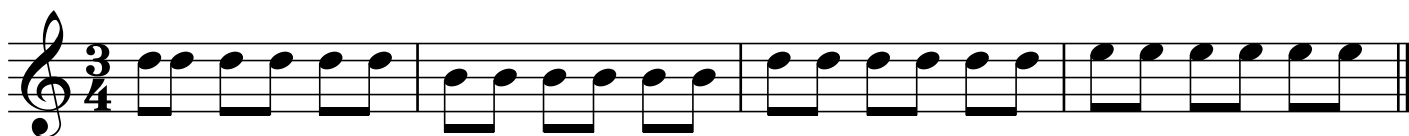


Reading Practice: 3/4 Time simple

Ex 1



Ex 2



Ex 3



Ex 4



Ex 5

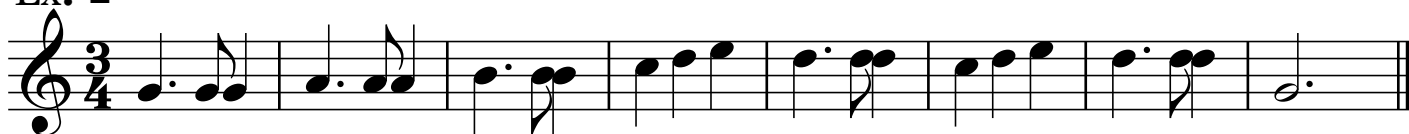


ReadingPractice: 3/4 time

Ex. 1



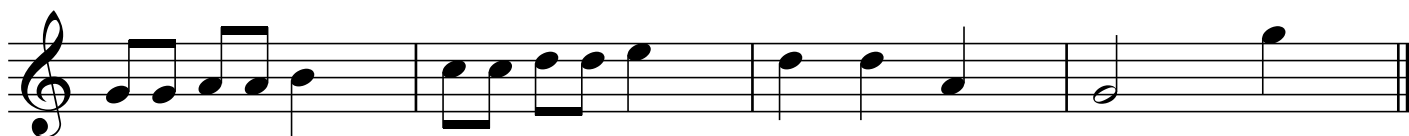
Ex. 2



Ex. 3



Ex. 4



Reading Practice: Ties

Ex 1



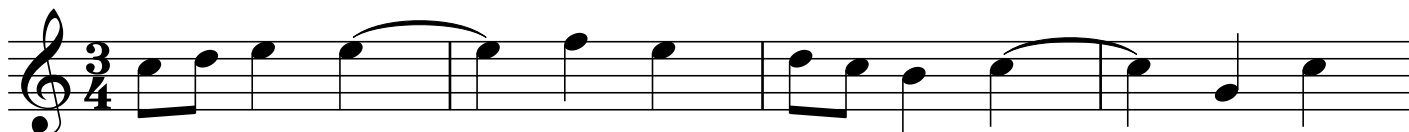
Ex 2



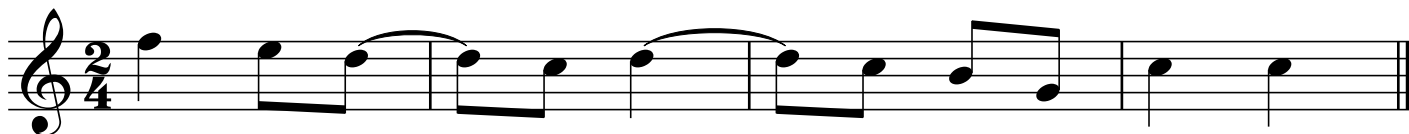
Ex 3



Ex 4



Ex 5

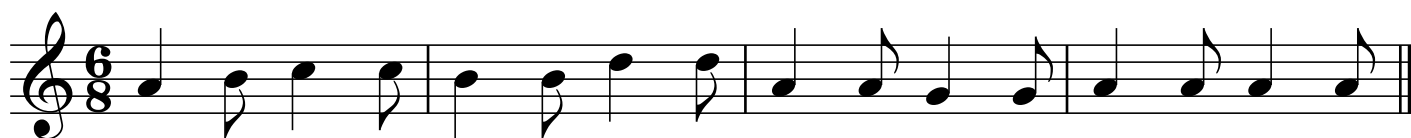


Reading Practice: 6/8

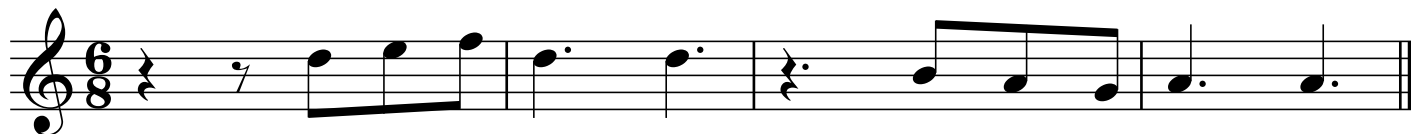
Ex. 1



Ex. 2



Ex. 3

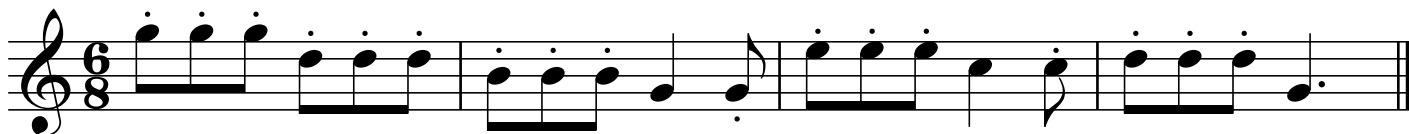


Ex. 4



Reading Practice: Staccato & Legato

Ex. 1



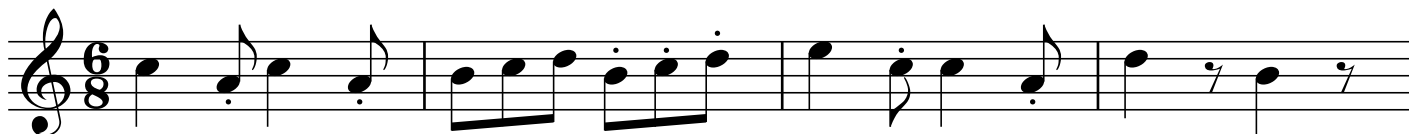
Ex. 2



Ex. 3

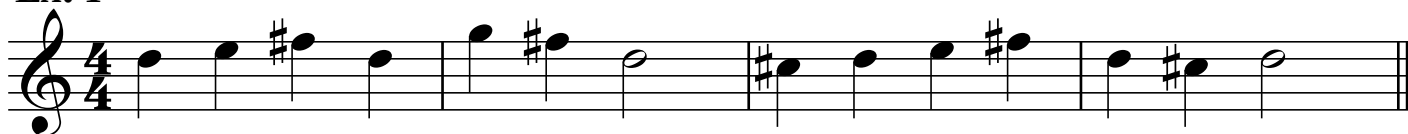


Ex. 4



Reading Practice: Sharps & Flats

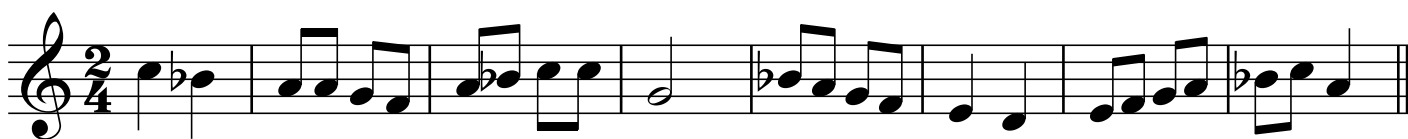
Ex. 1



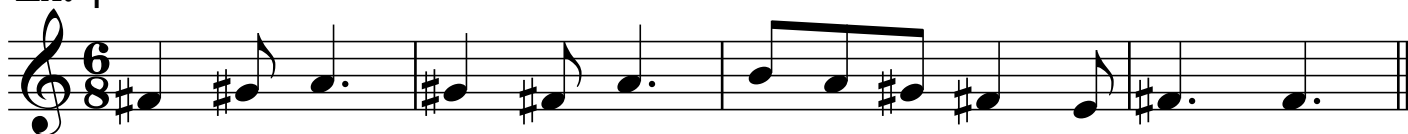
Ex. 2



Ex. 3



Ex. 4



Reading Practice: Sharps & Flats (2)

Ex. 1

Musical notation for Ex. 1: Treble clef, 4/4 time signature, key signature of one sharp (F#). The melody consists of eighth and quarter notes with various accidentals.

Ex. 2

Musical notation for Ex. 2: Treble clef, 3/4 time signature, key signature of one sharp (F#). The melody consists of quarter and eighth notes with various accidentals.

Ex. 3

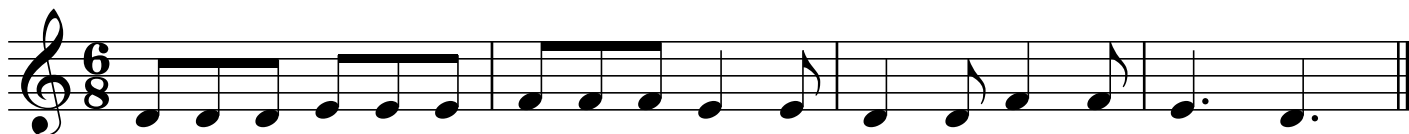
Musical notation for Ex. 3: Treble clef, 2/4 time signature, key signature of one sharp (F#). The melody consists of eighth and quarter notes with various accidentals.

Ex. 4

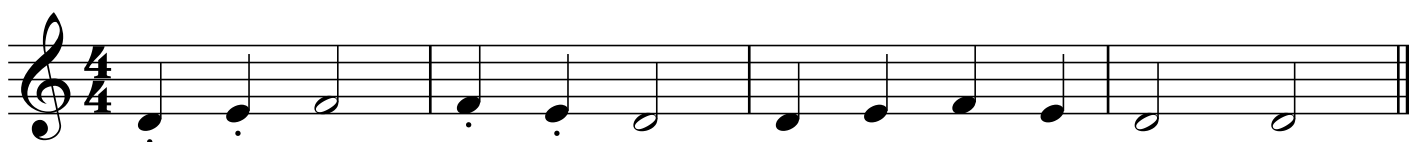
Musical notation for Ex. 4: Treble clef, 6/8 time signature, key signature of one flat (Bb). The melody consists of eighth and quarter notes with various accidentals.

Reading Practice: 4th String (1)

Ex. 1



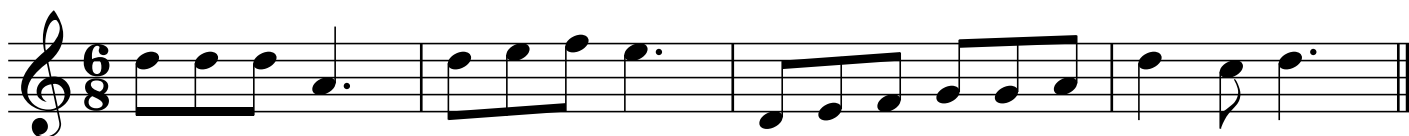
Ex. 2



Ex. 3

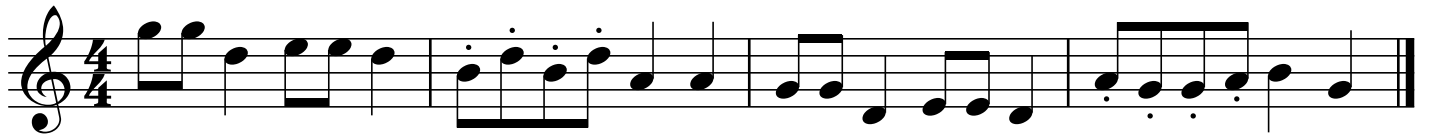


Ex. 4



Reading Practice: 4th String (2)

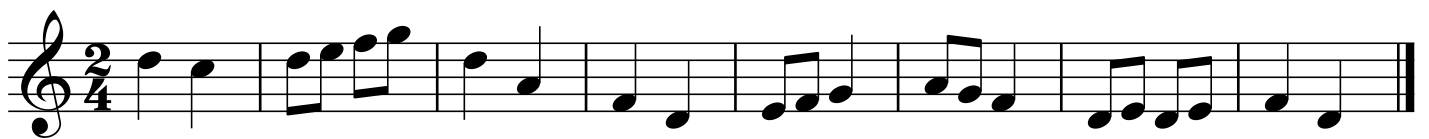
Ex 1



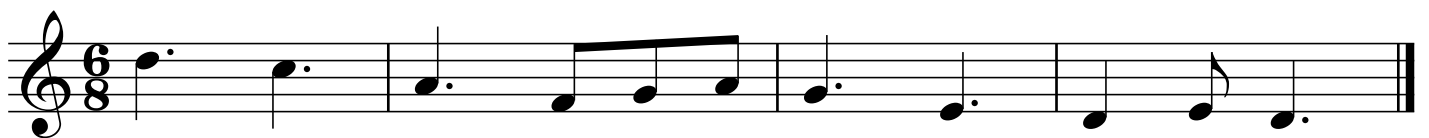
Ex 2



Ex 3

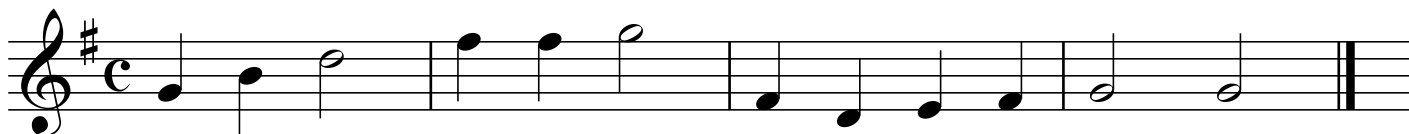


Ex 4



Reading Practice:Key Signatures(1)

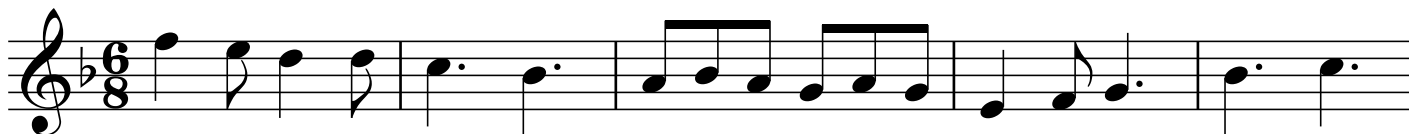
Ex. 1



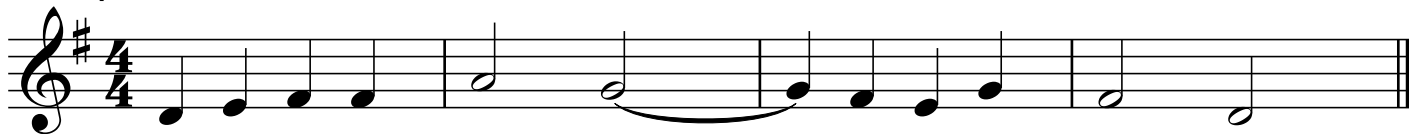
Ex. 2



Ex. 3

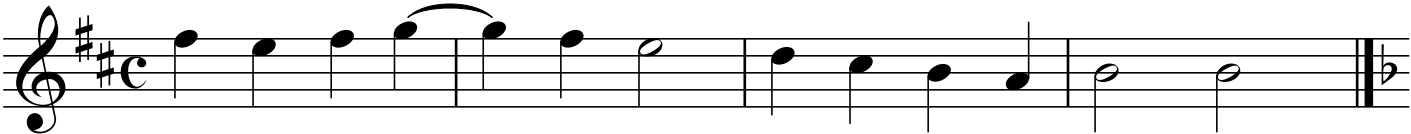


Ex. 4

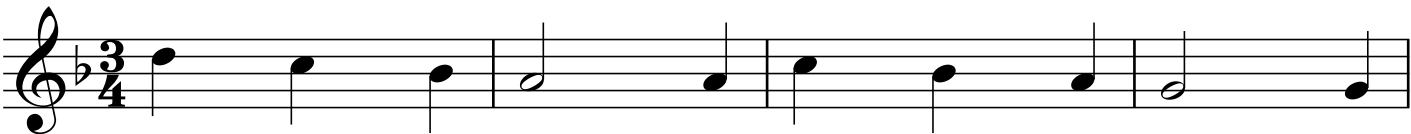


Reading Practice: Key Signatures (2)

Ex. 1



Ex. 2



Ex. 3



Ex. 4

