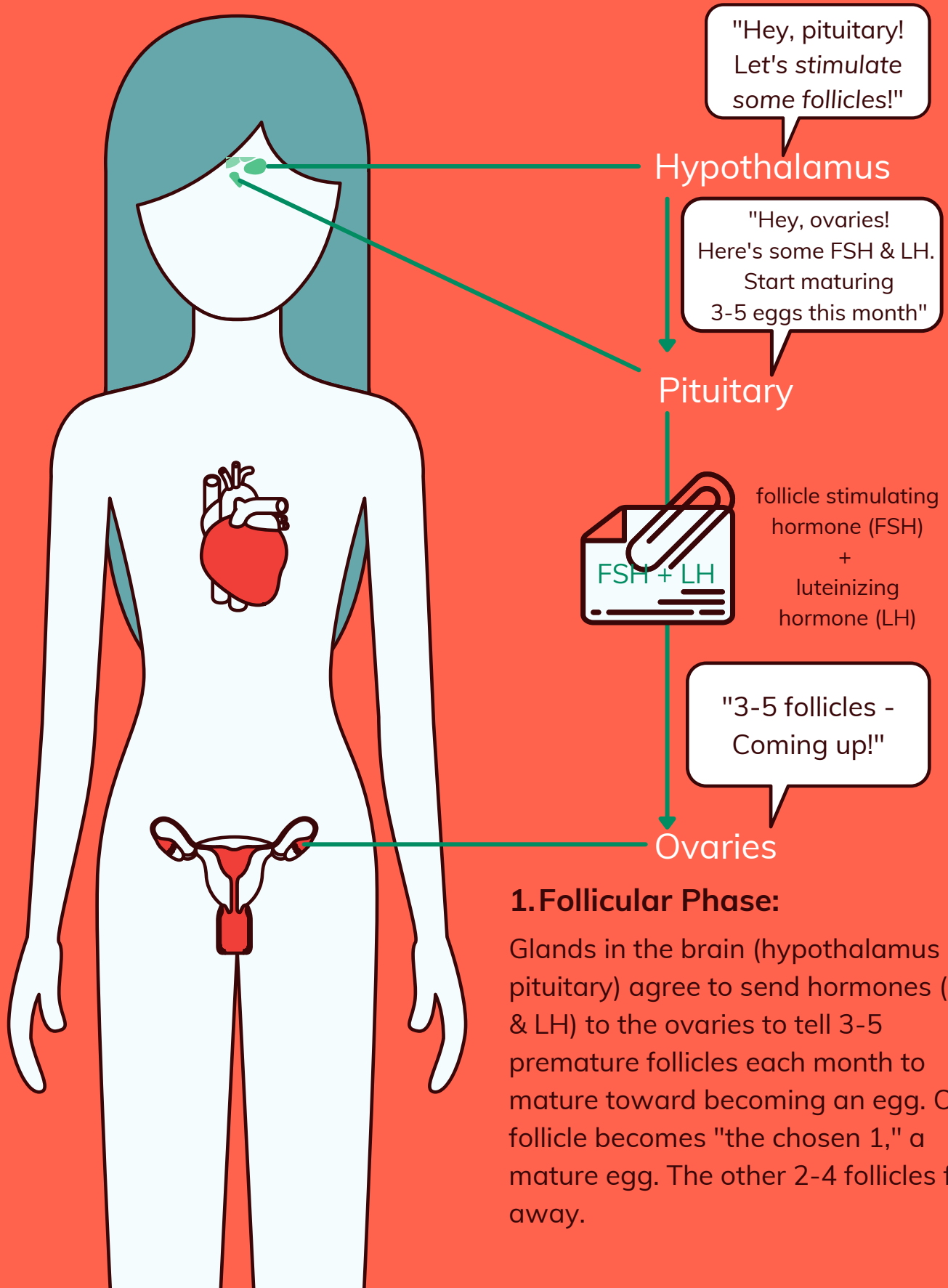


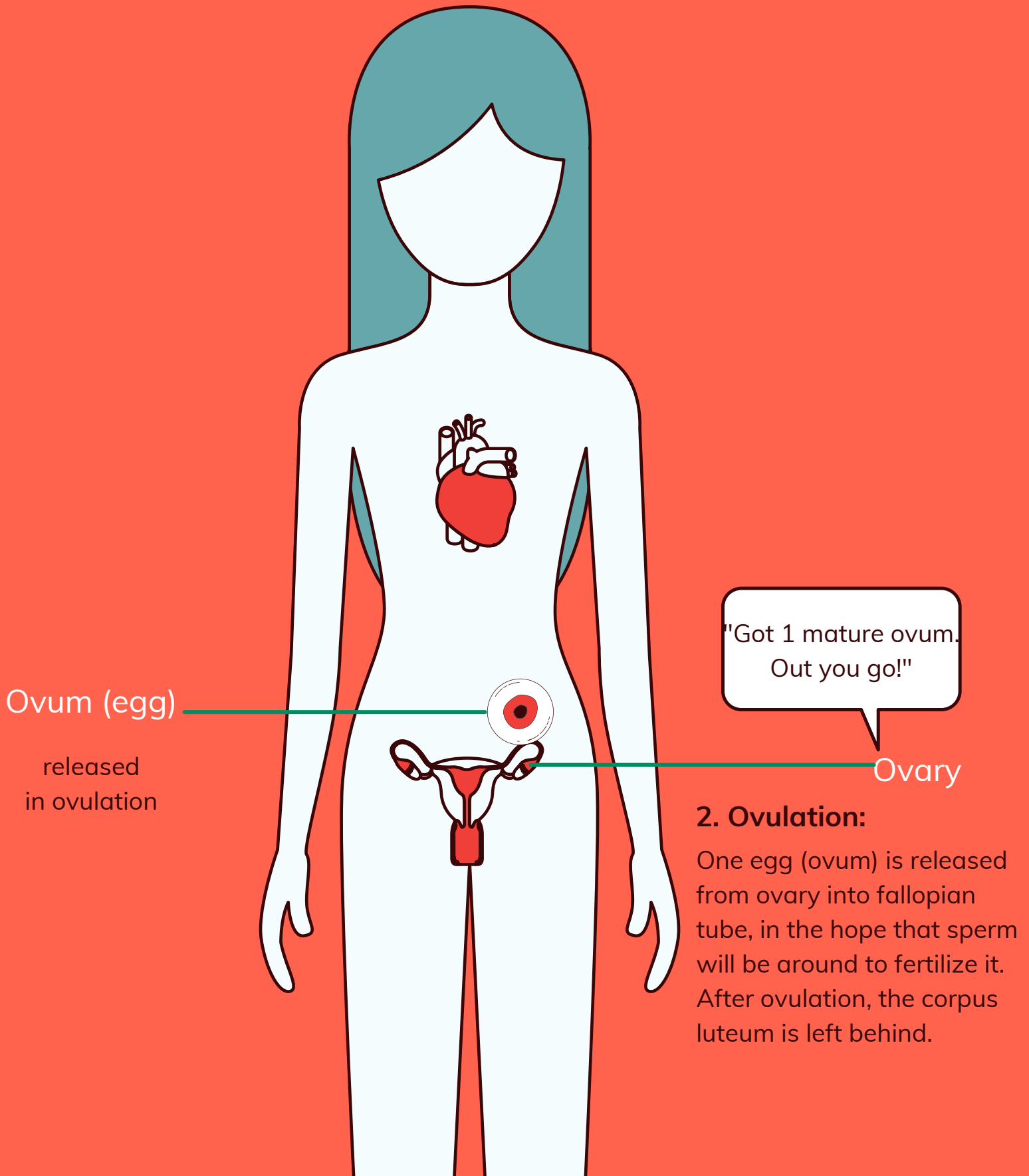
# Normal Female Reproductive Cycle

## Follicular Phase (day 0-14) - Simplified



# Normal Female Reproductive Cycle

## Ovulation (day 15) - Simplified

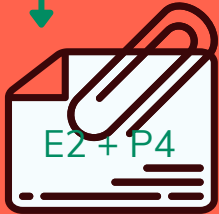


# Normal Female Reproductive Cycle

## Luteal Phase (day 16-28) - Simplified

**Corpus Luteum**  
left behind after ovulation

estradiol (E2)  
+  
progesterone (P4)



**Uterus**

responds to estradiol & progesterone sent from corpus luteum by building the endometrium (uterine lining) to prepare for possible pregnancy

"Hey, uterus!  
Get ready in case  
there's a baby"

**Ovary**

### 3. Luteal Phase:

Corpus luteum (left behind in ovary after ovulation) sends estradiol & progesterone to the uterus, telling it to get ready in case there's a fertilized egg.

# Normal Female Reproductive Cycle

## Testosterone & SHBG - Simplified

