

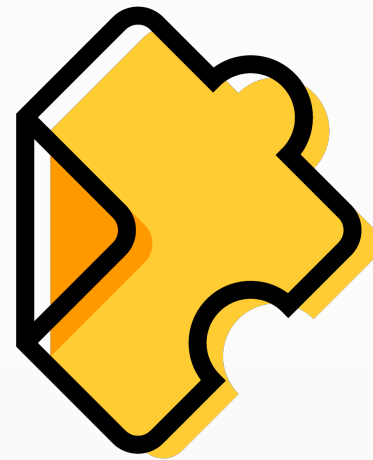
*“Deliver your lesson in
class or at home.”*

“Students can rewatch the video as many times as they need.”

*“You hold your students
accountable.”*

*“Your lessons never
expire. Reuse them year
after year.”*

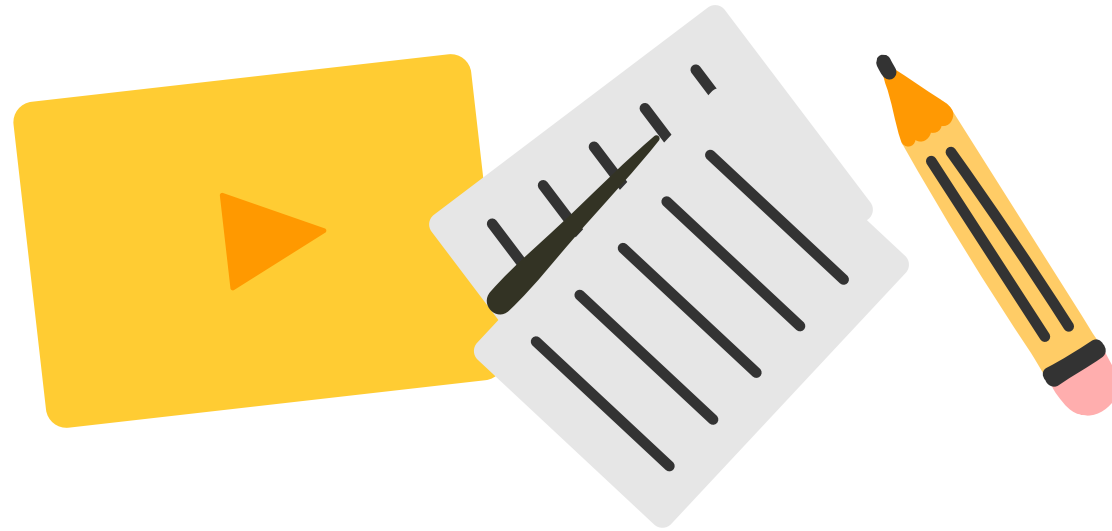
*“Edpuzzle is the best thing
since sliced bread.”*



edpuzzle

Make any video your lesson

What is Edpuzzle?



Choose any [video](#) from YouTube, embed your own [assessment](#) questions, and track your [students' progress](#).

It's easy and powerful!

Why Edpuzzle is your new best friend



- Your students watch the video at their **own pace**.
- You hold every student **accountable**: see who's watching and who answers the questions. They won't be able to skip ahead or open other tabs.
- Get 100% **student participation**!

When do you use Edpuzzle?

In-class



Rotation stations

Individual work

Listening
comprehension

Homework



Complement your lesson

Demonstrate math problems

Introduce grammar & vocab

Prepare for class discussion

Review



Key unit concepts

Exam study guides

Classroom/lab rules

How can you view Edpuzzle?

Classic

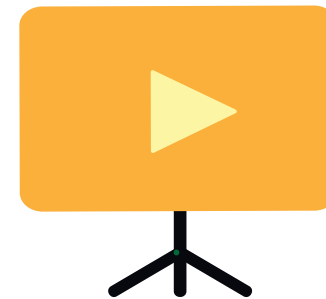


Students watch the video individually

They work independently and at their own pace

Perfect for rotation stations or flipped classroom

Live Mode



You project the video in front of the class

Students answer on their own devices in real time

You get live feedback to spark in-class discussion

What types of classes can you create?

Classic Class



Students need to log in or sign up

Track students' progress across
all your videos

Perfect if you can't live without
videos in your lessons!

Open Class



Students don't need an account

See students' progress one video
at a time

Perfect for demos, quick practice,
and elementary students!

Don't reinvent the wheel – save time!

Share

Use a ready-made lesson from another teacher

YouTube

Search for any YouTube video & copy it to your content

Upload

Record & upload your own teaching videos

Step by step

1. Go to edpuzzle.com.
2. Sign up as a [teacher](#).
3. Connect your [school](#) & [department](#).
4. Follow the tutorial to [create your first video lesson!](#)

Edpuzzle LMS integrations

Set up Edpuzzle so your students can watch right from your LMS!

[Google Classroom](#)

[Canvas](#)

[Schoology](#)

[Moodle](#)

[PowerSchool](#)

[Blackboard](#)

Play time!

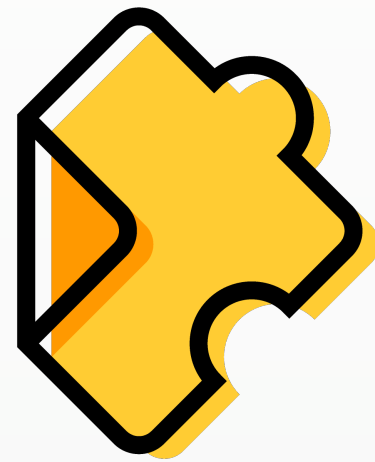


Want to learn more?

go.edpuzzle.com/OnlinePD

Use Edpuzzle to get [officially certified](#) in topics like:

- Edpuzzle Coach
- Flipped Learning
- Google Tools
- Tech Integration
- Project-Based Learning (PBL)



edpuzzle