

THE IMPACT OF

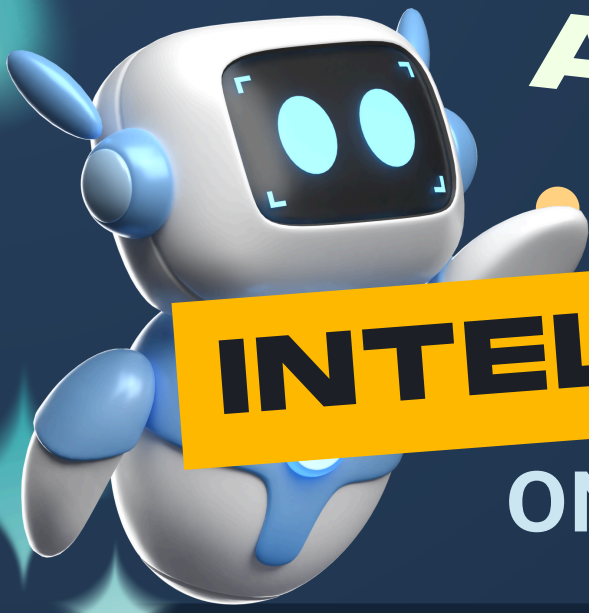


ARTIFICIAL



INTELLIGENCE

ON THE JOB MARKET



JOB DISPLACEMENT

AI has the potential to automate many tasks that are currently performed by humans. This could lead to job displacement in certain industries, particularly in manufacturing, transportation, and customer service. However, it is also important to note that AI is creating new job opportunities in areas such as data analysis, programming, and AI development.



INCREASED EFFICIENCY & PRODUCTIVITY



AI has the ability to process large amounts of data quickly and accurately, which can lead to increased efficiency and productivity in many industries. This can create new job opportunities for individuals with the skills to work with and develop AI technologies

UPSKILLING & RESKILLING

As AI technology continues to advance, there will be a greater demand for individuals with the skills to work with and manage these technologies. This will require many workers to upskill or reskill in order to remain relevant in the job market. Employers may need to invest in training programs to ensure their workforce has the necessary skills to work with AI.



ETHICAL CONSIDERATIONS



AI raises important ethical considerations, particularly around issues such as bias and privacy. As AI becomes more prevalent in the workplace, it will be important for employers to ensure that AI technologies are developed and used in a way that is ethical and fair. This may require new regulations and policies to be put in place.

COLLABORATION BETWEEN HUMANS & AI

AI is not necessarily a replacement for human workers, but rather a tool that can be used to enhance human performance. In order to fully realize the potential of AI, it will be important for humans and AI technologies to work together collaboratively. This will require a shift in mindset and the development of new skills and knowledge.

