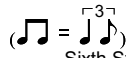


Using Barre Chords

Beginner Blues - Rhythm Guitar

Corey Congilio



Sixth String Root Barre Chord

Fifth String Root Barre Chord

A 03:29

A7



D7



Section A musical notation. Treble clef, key signature of two sharps (F# and C#), 4/4 time signature. The first measure is marked with a first ending bracket and a first ending repeat sign. The second measure is marked with a second ending bracket and a second ending repeat sign. The dynamic marking *mf* is present. The guitar tablature below shows the fret numbers for each string: 5-5-6-5-5-7 for the first measure and 5-7-5-7-5 for the second measure.

B 05:37

A7



Section B musical notation. Treble clef, key signature of two sharps (F# and C#), 4/4 time signature. Measures 3 through 6 are shown. Each measure contains a barre chord with a rhythmic pattern of eighth notes. The guitar tablature below shows the fret numbers for each string: 5-5-5-5-5-5 for measure 3, 5-5-5-5-5-5 for measure 4, 5-5-5-5-5-5 for measure 5, and 5-5-5-5-5-5 for measure 6.

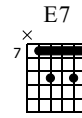
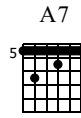
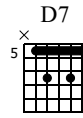
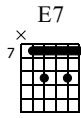
D7



A7



Section B musical notation. Treble clef, key signature of two sharps (F# and C#), 4/4 time signature. Measures 7 through 10 are shown. Each measure contains a barre chord with a rhythmic pattern of eighth notes. The guitar tablature below shows the fret numbers for each string: 7-7-7-7-7-7 for measure 7, 5-5-5-5-5-5 for measure 8, 5-5-5-5-5-5 for measure 9, and 5-5-5-5-5-5 for measure 10.



A musical score for guitar. The top staff is in treble clef with a key signature of two sharps (F# and C#). It contains four measures of music, labeled 11, 12, 13, and 14. Measure 11 has a whole note chord. Measure 12 has a whole note chord. Measure 13 has a whole note chord. Measure 14 has a whole note chord. Below the staff is a TAB section with three lines labeled T, A, and B. The TAB shows fret numbers for each string: T (7, 9, 7), A (9, 7, 9), and B (7, 7, 7) for measure 11. For measure 12: T (5, 7, 5), A (5, 5, 5), B (5, 7, 5). For measure 13: T (5, 5, 5), A (5, 6, 5), B (5, 7, 5). For measure 14: T (7, 9, 7), A (7, 9, 9), B (7, 9, 7). The TAB ends with a double bar line and a repeat sign.