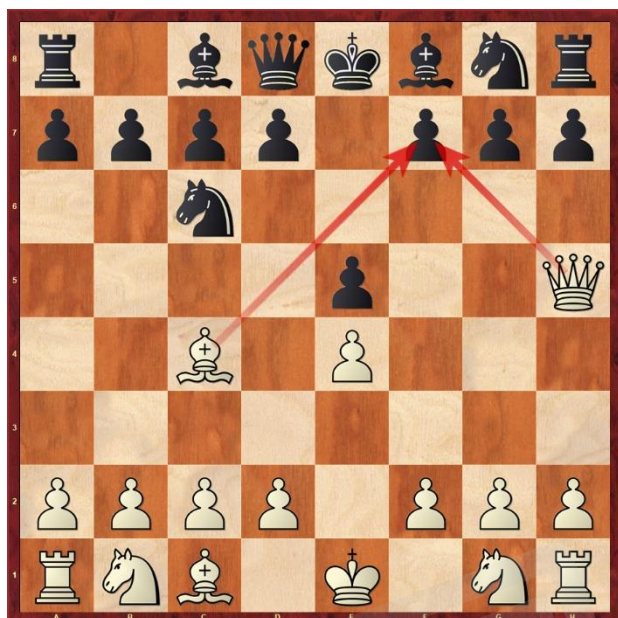


# 将杀敌王！——进攻的秘密 (Checkmate! The secrets of attack) 1

1. Is Scholar's mate the "direct attack" or "indirect attack"?



2. Why Scholar's mate is not a good way to attack?



# 将杀敌王！——进攻的秘密 (Checkmate! The secrets of attack) 1

3. Should white launch a "direct attack" now? What should white play?



4. Black just played g6, what is the new weakness for black now? What should white play?



# 将杀敌王！——进攻的秘密 (Checkmate! The secrets of attack) 1

5. White is going to play d4, is this move the “direct attack” or “indirect attack” ?



6. Which move should white to play in order to follow the “3-piece rule” ?



# 将杀敌王! ——进攻的秘密 (Checkmate! The secrets of attack) 1

7. Can you find the winning combination for white?



8. What advantage does white has? What should white play?



# 将杀敌王！——进攻的秘密 (Checkmate! The secrets of attack) 1

9. What should white play?



10. Can you find the winning combination for white? Write down your variations.



## Game Study:

### Game 1:

1.d4 d5 2.c4 e6 3.Nc3 Nf6 4.Bg5 Be7 5.e3 0-0 6.Nf3 b6 7.Bd3 Bb7 8.cxd5  
exd5 9.Bxf6 Bxf6 10.h4 g6 [10...Nd7! 11.Qc2 (11.Bxh7+? Kxh7 12.Ng5+  
Kh6) ]

11.h5 Re8 12.hxg6 hxg6 13.Qc2 Bg7?? [13...Kg7]

14.Bxg6 fxc6 15.Qxg6 Nd7 16.Ng5! Qf6 17.Rh8+ Kxh8 18.Qh7#

1-0

### Game 2:

#### Alexander Alekhine – M Prat [D20]

Simul, 16b Caf..R de la R..Rgence, Paris, 10.09.1913

1.d4 d5 2.Nf3 Nc6 3.c4 e6 4.Nc3 dxc4 5.e3 Nf6 6.Bxc4 Bb4 7.0-0 Bxc3  
8.bxc3 0-0 9.Qc2 Ne7 10.Ba3 c6 11.e4 h6 12.Rad1 Bd7 13.Ne5 Re8 14.f4  
Qc7 15.f5 Rad8 16.Nxf7 Kxf7 17.e5 Neg8 18.Bd6 Qc8 19.Qe2 b5 20.Bb3  
a5 21.Rde1 a4 22.Qh5+ Nxh5 23.fxe6+ Kg6 24.Bc2+ Kg5 25.Rf5+ Kg6  
26.Rf6+ Kg5 27.Rg6+ Kh4 28.Re4+ Nf4 29.Rxf4+ Kh5 30.g3

1-0

## Answers:

1. Scholar's mate is direct attack
2. Because we should only do direct attack when it can bring opponent new weakness.
3. White should play Ng5, launching a “direct attack”. Because it can bring opponent new weakness now.
4. Black has weakened his dark squares now. White can play Ne4 then Bg5
5. d4 is “indirect attack”. After Bb7, White can play dc Nc5 Qd4!
6. Ng5
7. 17.Rh8+ Kxh8 18.Qh7#
8. White has advantage on the center. Therefore, white can attack on Black king now. f4!
9. Nf7! Sacrificing a knight to expose black king.
10. 22.Qh5+ Nxh5 23.fxe6+ Kg6 24.Bc2+ Kg5 25.Rf5+ Kg6 26.Rf6+ Kg5 27.Rg6+ Kh4 28.Re4+ Nf4 29.Rxf4+ Kh5 30.g3